



Auckland Hill, SE27 | £525,000

02087029888

westnorwood@pedderproperty.com

pedder
We live local



In General

- Two double bedrooms
- Period property
- Private garden
- Split level
- Chain free
- Approx 1,137 sq ft

In Detail

A characterful split-level maisonette set within an attractive period conversion on Auckland Hill, SE27.

Offering approximately 1,137 sq ft of internal space, this substantial home comprises two exceptionally generous reception rooms, both enhanced by striking feature fireplaces, high ceilings, and beautiful bay windows positioned to either side of the property. Floor-to-ceiling doors allow the spaces to be separated if desired, creating excellent flexibility for both entertaining and everyday living.

The rear reception room opens directly onto a private south-westerly facing garden measuring approximately 69 ft 2 in, providing an ideal outdoor retreat. To the front of the property, the reception room leads into the kitchen, which offers potential to reconfigure and open the space further, subject to the necessary permissions. The ground floor is completed by a useful WC and ample built-in storage cupboards.

Upstairs, the impressive principal bedroom benefits from an original balcony overlooking the garden and is flooded with natural light through original sash windows, further complemented by an elegant statement ceiling rose. The second double bedroom is also generously proportioned and features beautiful cornicing and an original fireplace. Completing the property is the main bathroom, fitted with a walk-in shower.

Auckland Hill is ideally located for access to Norwood High Street and quick transport links into The City and West End. Regular services from West Norwood station into London Bridge and London Victoria as well as a host of bus connections through neighbouring Dulwich, Herne Hill, Brixton and Streatham.

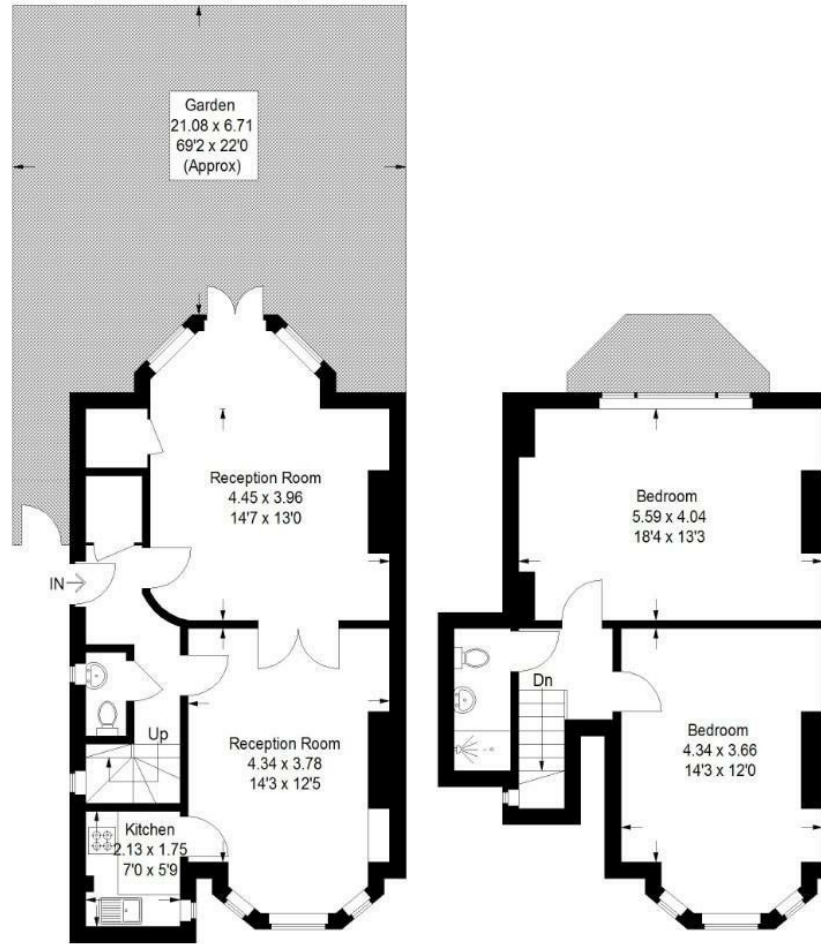
EPC: | Council Tax Band: | Lease: 90 years remaining | SC: £1200pa | GR: £50pa | BI: TBC



Floorplan

Auckland Hill, SE27

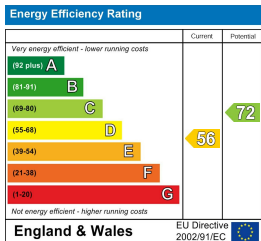
Approximate Gross Internal Area
105.6 sq m / 1137 sq ft



Ground Floor

First Floor

Copyright www.pedderproperty.com © 2026
 These plans are for representation purposes only as defined by RICS - Code of Measuring Practice.
 Not drawn to Scale. Windows and door openings are approximate. Please check all dimensions,
 shapes and compass bearings before making any decisions reliant upon them.



Pedder Property Ltd trading as Pedder for themselves and for the vendor/landlord of this property whose agents they are, give notice that (1) these particulars do not constitute any part of an offer or contract, (2) all statements contained within these particulars are made without responsibility on the part of Pedder or the vendor/landlord, (3) whilst made in good faith, none of the statements contained within these particulars are to be relied upon as a statement of representation or fact, (4) any intending purchaser/tenant must satisfy him/herself by inspection or otherwise as to the correctness of each of the statements contained within these particulars, (5) the vendor/landlord does not make or give either Pedder or any person in their employment any authority to make or give representation or warranty whatsoever in relation to this property.